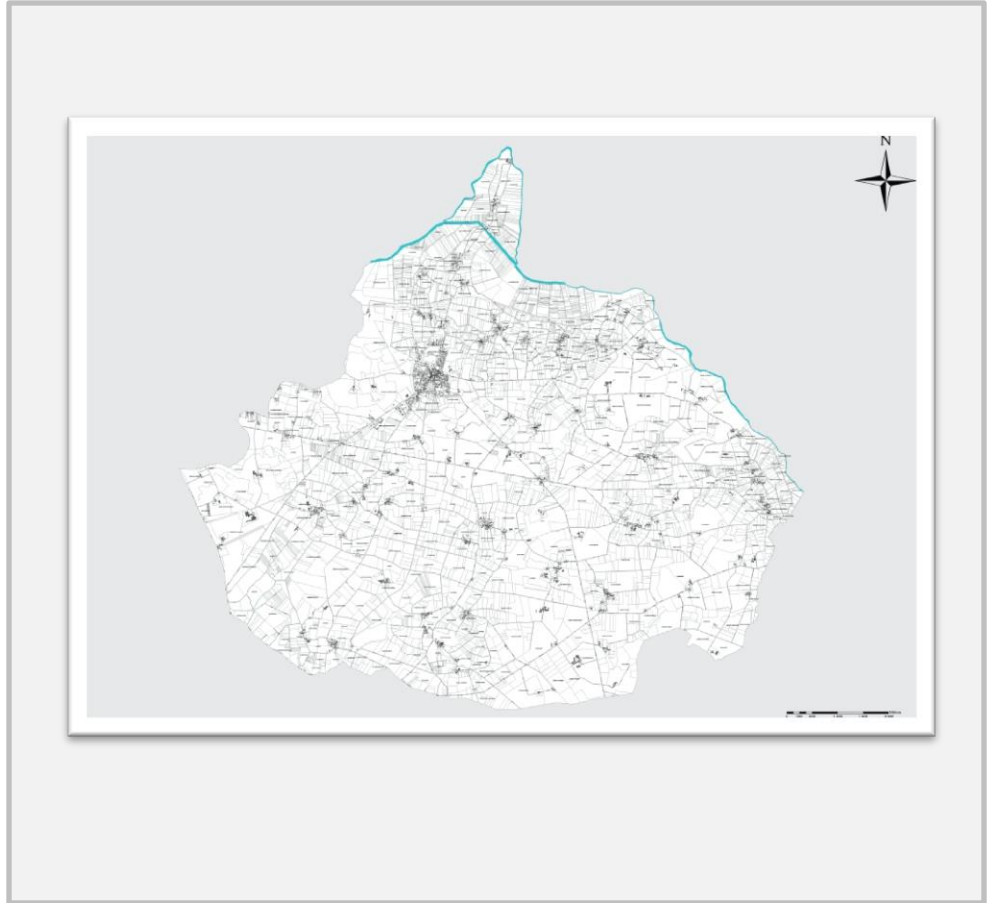


# Modification simplifiée du PLU

AGENCE CITTE CLAES

6, rue Gustave Eiffel case 4005 – 44806 Saint Herblain Cedex  
Tel : 02.51.78.67.97 E-mail : [agence.citte-claes@citte.biz](mailto:agence.citte-claes@citte.biz)



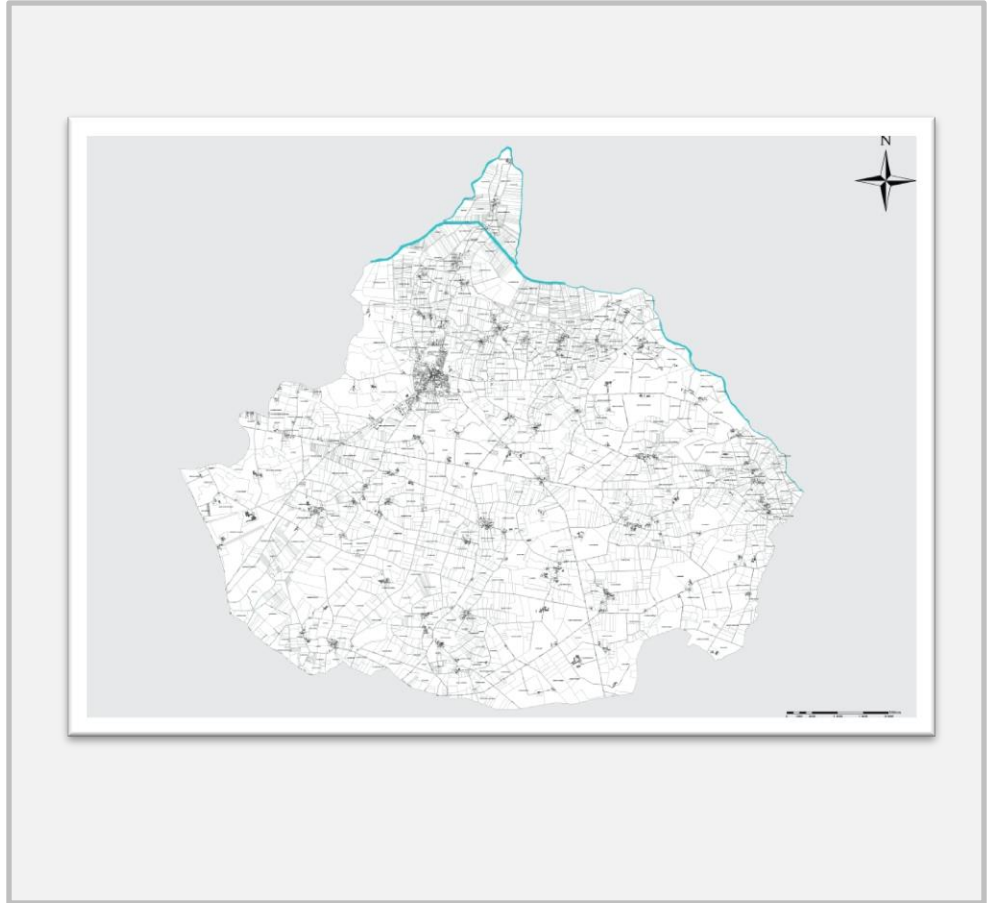


## 0. Pièces administratives

AGENCE CITTE CLAES

6, rue Gustave Eiffel case 4005 – 44806 Saint Herblain Cedex  
Tel : 02.51.78.67.97 E-mail : [agence.citte-claes@citte.biz](mailto:agence.citte-claes@citte.biz)



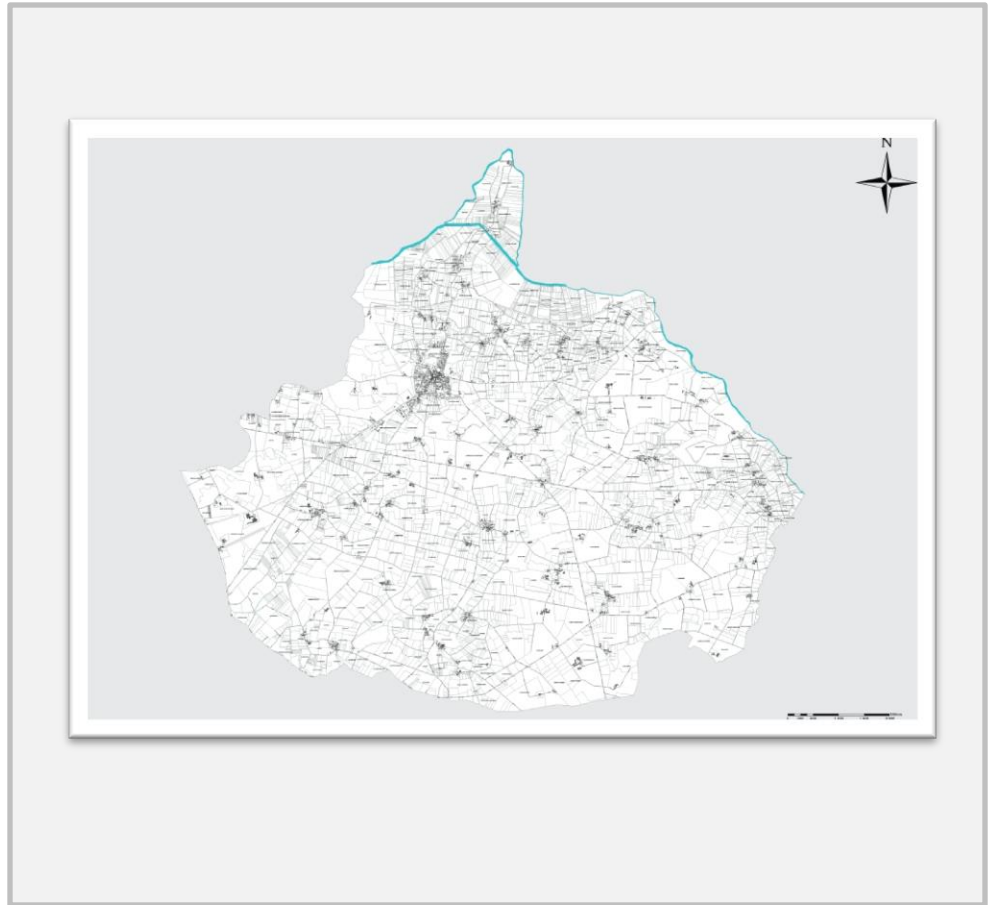


# 1. Notice

AGENCE CITTE CLAES

6, rue Gustave Eiffel case 4005 – 44806 Saint Herblain Cedex  
Tel : 02.51.78.67.97 E-mail : [agence.citte-claes@citte.biz](mailto:agence.citte-claes@citte.biz)



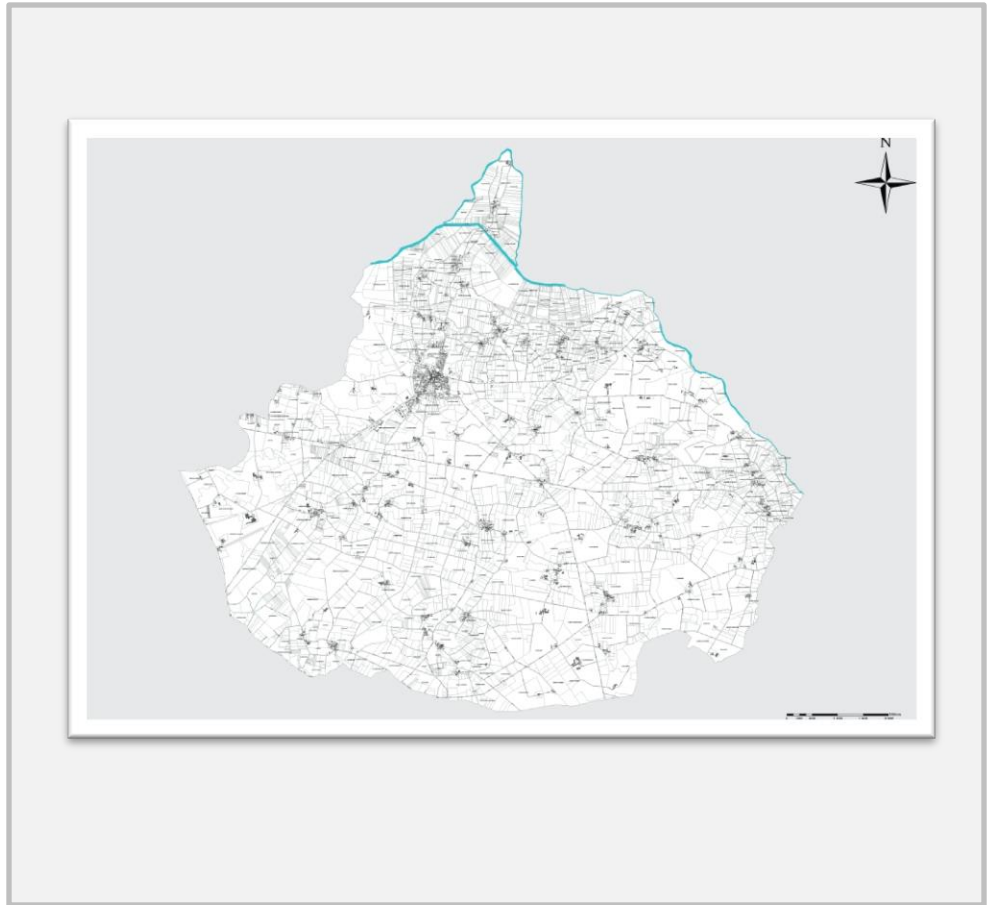


## 2. Projet de Règlement

AGENCE CITTE CLAES

6, rue Gustave Eiffel case 4005 – 44806 Saint Herblain Cedex  
Tel : 02.51.78.67.97 E-mail : [agence.citte-claes@citte.biz](mailto:agence.citte-claes@citte.biz)



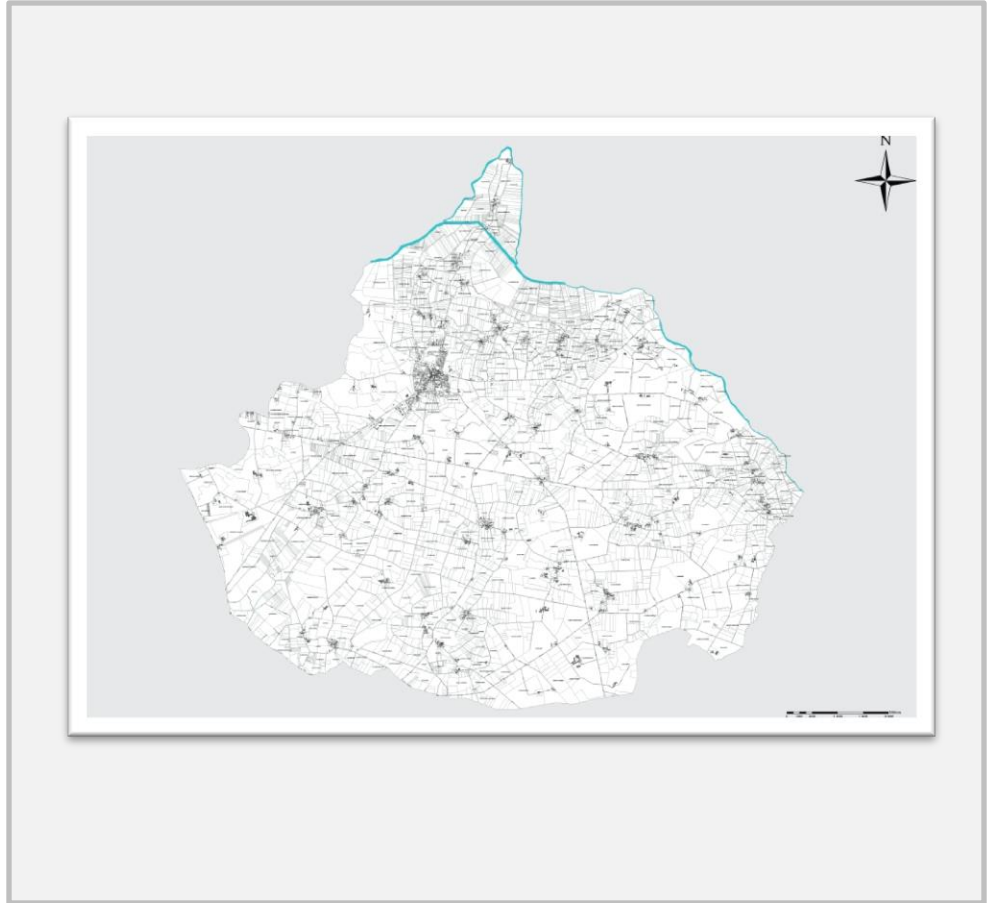


### 3. Projet de Zonage

AGENCE CITTE CLAES

6, rue Gustave Eiffel case 4005 – 44806 Saint Herblain Cedex  
Tel : 02.51.78.67.97 E-mail : [agence.citte-claes@citte.biz](mailto:agence.citte-claes@citte.biz)





## 4. Plan de servitude corrigé

AGENCE CITTE CLAES

6, rue Gustave Eiffel case 4005 – 44806 Saint Herblain Cedex  
Tel : 02.51.78.67.97 E-mail : [agence.citte-claes@citte.biz](mailto:agence.citte-claes@citte.biz)

